

# SULLAIR TOOLS

# ROCK DRILL MODEL MRD-55

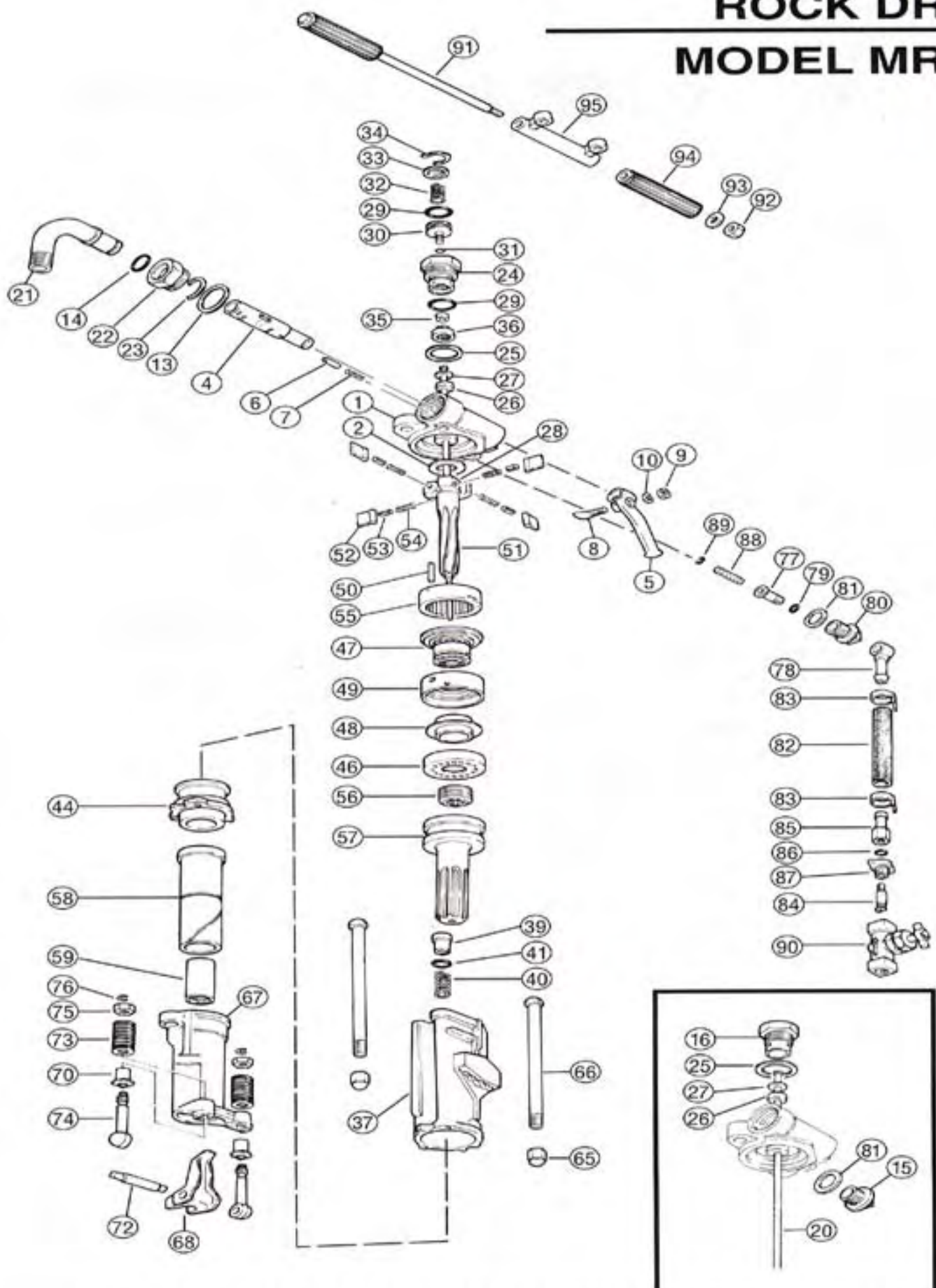
SYM. NO.	PART NO.	NO.	DESCRIPTION	AMT. REQ.
1	250027-196	7810-01-010C	Back Head (Inc.#2)	1
2	250027-197	7825-01-015A	Back Head Washer	1
4	250027-198	7825-01-0020	Throttle Valve	1
5	250027-199	7825-01-003C	Throttle Valve Handle	1
6	250027-200	7825-01-004C	Throttle Valve Plunger	1
7	250027-201	7898-17-0110	Throttle Valve Spring	1
8	250027-202	7825-01-0060	Throttle Valve Bolt	1
9	250027-203	9913-23-5000	Throttle Valve Nut	1
10	250027-204	9920-13-5000	Throttle Valve Washer	1
13	250027-207	7825-01-0110	Air Connection Spring Washer	1
14	250027-208	9954-80-0210	Air Connection O-Ring	1
15	250027-209	7825-02-0130	Washer Gland Plug	1
16	250027-210	7825-11-031A	Blow Tube Gland	1
20	250027-211	7825-11-0360	Blow Tube	1
21	250027-205	7825-01-008F	Air Connection	1
22	250027-206	7825-01-0090	Air Connection Nut	1
23	250027-214	7898-03-2268	Air Connection Retainer	1
24	250027-215	7825-10-031A	Water Tube Gland	1
25	250027-217	7825-10-0330	Tube Gland Gasket	1
26	250012-218	7825-10-0340	Tube Gasket	1
27	250012-219	7825-10-0350	Tube Washer	1
28	250027-220	7825-10-0360	Water Tube	1
29	250027-221	9954-80-0180	O-Ring	2
30	250027-222	7825-10-032F	Water Valve Piston	1
31	250027-223	9954-80-0030	O-Ring	1
32	250027-224	7898-17-0260	Water Valve Spring	1
33	250027-225	7825-10-0380	Water Valve Spring Seat	1
34	250027-226	7825-10-039A	Water Valve Retainer	1
35	250027-227	7825-10-041A	Water Valve Seat	1
36	250027-228	7825-10-042B	Water Valve Seat Retainer	1
37	250012-229	7820-21-050F	Cylinder	1
39	250012-230	7825-20-063A	Blowing Connection	1
40	250021-231	7898-17-0220	Blowing Connection Spring	1
41	250012-232	9954-80-0120	O-Ring	1
44	250012-233	7825-20-0690	Spacer	1
46	250012-234	7825-30-0710	Valve Chest Cover	1
47	250012-235	7820-30-0720	Valve Guide	1
48	250018-236	7820-31-0730	Valve	1
49	250021-237	7825-30-0750	Valve Chest	1
50	250021-238	7825-42-0810	Dowel Pin	1
51	250021-239	7825-42-382A	Rifle Bar	1
52	250021-240	7825-42-083C	Rotation Pawl	4
53	250012-241	7825-40-084A	Pawl Plunger	4
54	250012-242	7898-17-0840	Pawl Spring	4
55	250012-243	7825-42-0860	Ratchet Ring	1
56	250012-244	7825-52-101B	Rifle Nut	1
57	250012-245	7825-52-103B	Piston	1
58	250012-246	7825-61-114B	Rotation Sleeve	1
59	250012-248	7820-63-1150	Sleeve Bushing 1" Hex. x 4-1/4"	1
	250012-247	7825-61-1150	Sleeve Bushing 7/8" Hex. x 4-1/4"	(1)
65	250012-251	7820-70-121A	Side Rod Nut	2
66	250012-252	7875-70-1230	Side Rod	2
67	250012-253	7825-81-140A	Front Head 4-1/4" Shank (Inc.#70)	1
68	250012-255	7825-83-132C	Steel Retainer 1" x 4-1/4"	1
	250012-254	7820-80-132C	Steel Retainer 7/8" x 4-1/4"	(1)

SYM. NO.	PART NO.	NO.	DESCRIPTION	AMT. REQ.
70	250012-256	7825-80-141B	Front Head Bushing	2
72	250012-257	7825-80-138A	Retainer Pin	1
73	250012-258	7898-17-203A	Retainer Spring	2
74	250013-259	7825-80-134C	Retainer Bolt	2
75	250012-260	7825-80-135C	Retainer Nut	2
76	250012-261	7898-03-010B	Retainer Clamp	2
77	250012-262	7896-01-5310	Water Connecton Tube	1
78	250012-264	7896-01-0330	Water Connection Swivel	1
79	250012-265	9954-80-0100	O-Ring	1
80	250012-266	7896-01-032A	Water Connection Nut	1
81	250012-267	7825-02-0140	Water Connection/Plug Washer	1
82	250012-268	7898-07-4010	Water Hose	1
83	250012-269	7896-01-0040	Hose Clamp	2
84	250012-270	7896-01-5350	Swivel Hose Stem	1
85	250012-271	7896-01-036A	Swivel Hose Stem	1
86	250012-272	9954-81-0520	O-Ring	1
87	250012-273	7896-01-034A	Swivel Hose Stem Nut	1
88	250012-274	7896-01-0100	Water Connection Screen	1
89	250012-275	7896-01-0050	O-Ring	1
90	250012-276	7896-01-020B	Water Valve Complete	1
91	250012-277	7820-05-0230	Handle Bolt	1
92	250012-278	7811-05-0240	Handle Bolt Nut	1
93	250012-279	9920-36-0000	Handle Bolt Washer	2
94	250012-280	7811-05-020B	Handle Grip	2
95	250012-281	7810-06-025A	Short "D" Handle	1
NS	250012-263	7896-01-000C	Water Hose Assy. (5277-A)	1
NS	250012-216	7825-10-0000	Water Tube Assy. (5224-A)	1
NS	251315		1 Pt. Line Oiler (not included)	(1)

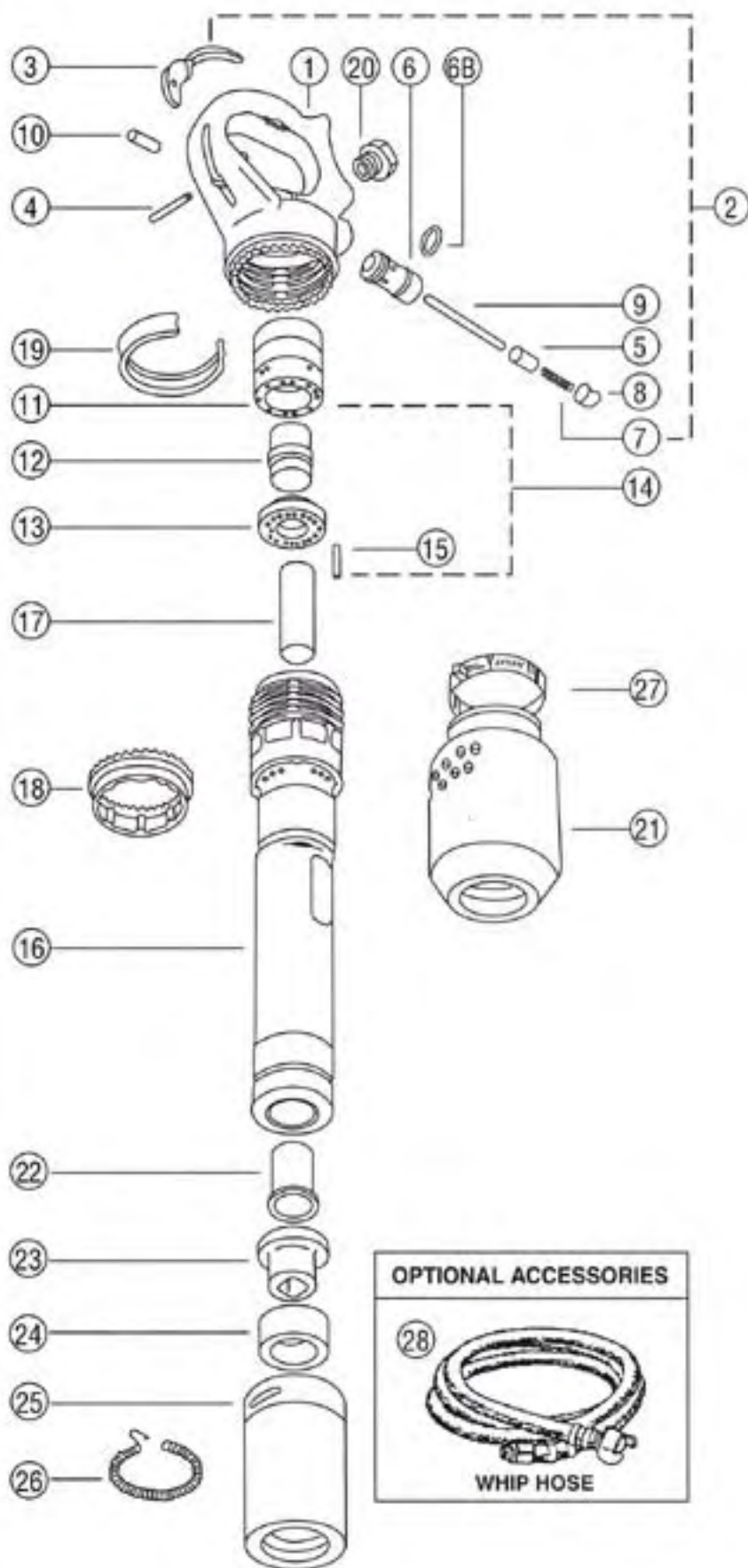


# SULLAIR TOOLS

## ROCK DRILL MODEL MRD-55



SYM. NO.	PART NO.	NO.	DESCRIPTION	AMT. REQ.
1	02250095-896	<b>8261</b>	Handle w/Bushing, #10	1
3	02250094-940	<b>8263</b>	Throttle Lever	1
4	02250094-897	<b>8264</b>	Throttle Lever Pin	1
5	02250094-898	<b>8265</b>	Throttle Valve	1
6	02250094-899	<b>8266</b>	Throttle Valve Bushing	1
6-B	02250094-901	<b>8266-B</b>	O-Ring	1
7	02250094-902	<b>8267</b>	Throttle Valve Spring	1
8	02250094-903	<b>8268</b>	Throttle Valve Plug	1
9	02250094-904	<b>8269</b>	Push Pin	1
10	02250094-905	<b>8270</b>	Push Pin Bushing	1
11	02250094-906	<b>8271</b>	Valve Box	1
12	02250094-907	<b>8272</b>	Valve	1
13	02250094-908	<b>8273</b>	Valve Cover Front	1
15	02250094-909	<b>8275</b>	Valve Dowel Pin	1
16	02250094-910	<b>8276</b>	Barrel (MRB-8)	1
16L	02250094-911	<b>8376</b>	Barrel (MRB-11)	(1)
17	02250094-917	<b>8277</b>	Piston 3" (MRB-8)	1
17L	02250094-918	<b>8377</b>	Piston 4" (MRB-11)	(1)
18	02250094-912	<b>8278</b>	Handle Lock Ring	1
19	02250094-913	<b>8279</b>	Handle Lock Spring	1
20	02250094-914	<b>8280</b>	Handle Bushing	1
21	02250094-915	<b>8281</b>	Muffler	1
22	250029-072	<b>9625</b>	Upper Sleeve Bushing (11X)	1
23	250013-625	<b>9624-B</b>	Lower Sleeve Bushing (11X)	1
24	250013-626	<b>9623-B</b>	Bumper	1
25	250013-623	<b>9621-B</b>	Retainer	1
26	250013-594	<b>9622</b>	Retaining Lock Spring	1
27	02250094-916	<b>8282</b>	Muffler Clamp	1
28		<b>9665</b>	Hose, Whip 6' w/Swivel & Cplg.	(1)
<b>ASSEMBLIES (NOT SHOWN)</b>				
2	02250094-938	<b>8262</b>	Handle Assembly Complete Includes Items #1, 3, 4, 5, 6, 6B, 7, 8, 9, 10, & 20	
14	02250094-939	<b>8274</b>	Valve Assembly Includes Items #11, 12, 13, & 15	





# SULLAIR TOOLS

## CHIPPING HAMMER

### MODEL MCH-2, 3, 4

SYM. NO.	PART NO.	NO.	DESCRIPTION	AMT. REQ.
<b>MCH SERIES (COMMON PARTS)</b>				
2	68722274	6717	Bushing, Air Inlet 1/4-24 Thrd	1
3	68CJ0018	6716	O-Ring, .906ID x .142W (70)	2
5	68722224	6136	Bushing, Air Inlet 1/4" NPT	1
6	68722225	6715	Spring, Throttle Valve	1
7	68722777	6714	Valve, Throttle	1
9	68722227	6712	Bushing, Throttle Valve Stem	1
10	68722228	6703	Trigger	1
11	68722998	6710	Handle, Bare	1
12	68524155	6719	Bolt, Handle	4
13	68WV5624	6704	Pin	4
14	68722229	6707	Valve Disc	1
15	68722230	6706	Seat, Valve	1
16	68722231	6255	Bumper, Valve Seat	1
20	68TB8230	3144-R	Bushing, .680 Round	1
	68722759	3144-H	Bushing, .580 Hex.	1
21	68723120	6252	Ring, Absorber	1
22	68722232	6718	Flange, Barrel	1
23	68722427	6720	Spacer, Vibration	4
24	68722428	6722	Spacer, Handle Bolt (Steel)	4
25	68VE8120	6723	Nut, Handle Bolt (Nylac)	4
26	250012-530	9105	Spring, Retainer Lock	1
27	68722235	9101	Retainer, Chisel Oval Collar-Chrome Plated	1
64	68723119	6714-N	Bushing, Throttle Valve Stem	1
65	68723118	6712-N	Valve, Throttle (4 in. overall)	1
68	68723115		Handle, Large	1
<b>(MODEL MCH-2 ONLY)</b>				
17	68722611	6253-2	Piston, 2" Stroke	1
18	68722451		Deflector, Exhaust (MCH-2/3)	1
19	68722310	6701-2	Barrel, 2" Stroke	1
<b>(MODEL MCH-3 ONLY)</b>				
17	68722234	6253-3	Piston, 3" Stroke	1
18	68722451		Deflector, Exhaust (MCH-2/3)	1
19	68722233	6701-3	Barrel, 3" Stroke	1
<b>(MODEL MCH-4 ONLY)</b>				
17	68722308	6253-4	Piston, 4" Stroke	1
18	68722452		Deflector, Exhaust (MCH-4)	1
19	68722307	6701-4	Barrel, 4" Stroke	1
<b>OPTIONAL RETAINERS AND REPLACEMENT PARTS</b>				
32	250012-526	9103	Retainer, Round Collar (Includes 250018-984)	1
33	250018-984		Bumper, Retainer	1
34	250021-222	9104	Retainer, Universal Ball Type	1
35	250021-224	9112	Spring, Retainer Sleeve	1
36	250021-223	9113	Sleeve, Retainer	1
37	250021-226	9114	Washer, Snap	1
38	250021-225	9111	Ball, Retainer (Set of 6)	1
62	250031-001		Retainer, Side Cut (Includes 250018-984 Bumper)	1
<b>OPTIONAL RETAINER LOCK SPRINGS</b>				
39	250013-916		Spring, Retainer Lock-Plastic	1
<b>OPTIONAL ACCESSORIES</b>				
1	250012-531	9135	Seal, Air Inlet 7/8-24 THD x 1/2" Hose Barb	1
4	250012-532	9135-S	Seal, Air Inlet 3/8-24 THD x 1/2" Hose Barb	1

